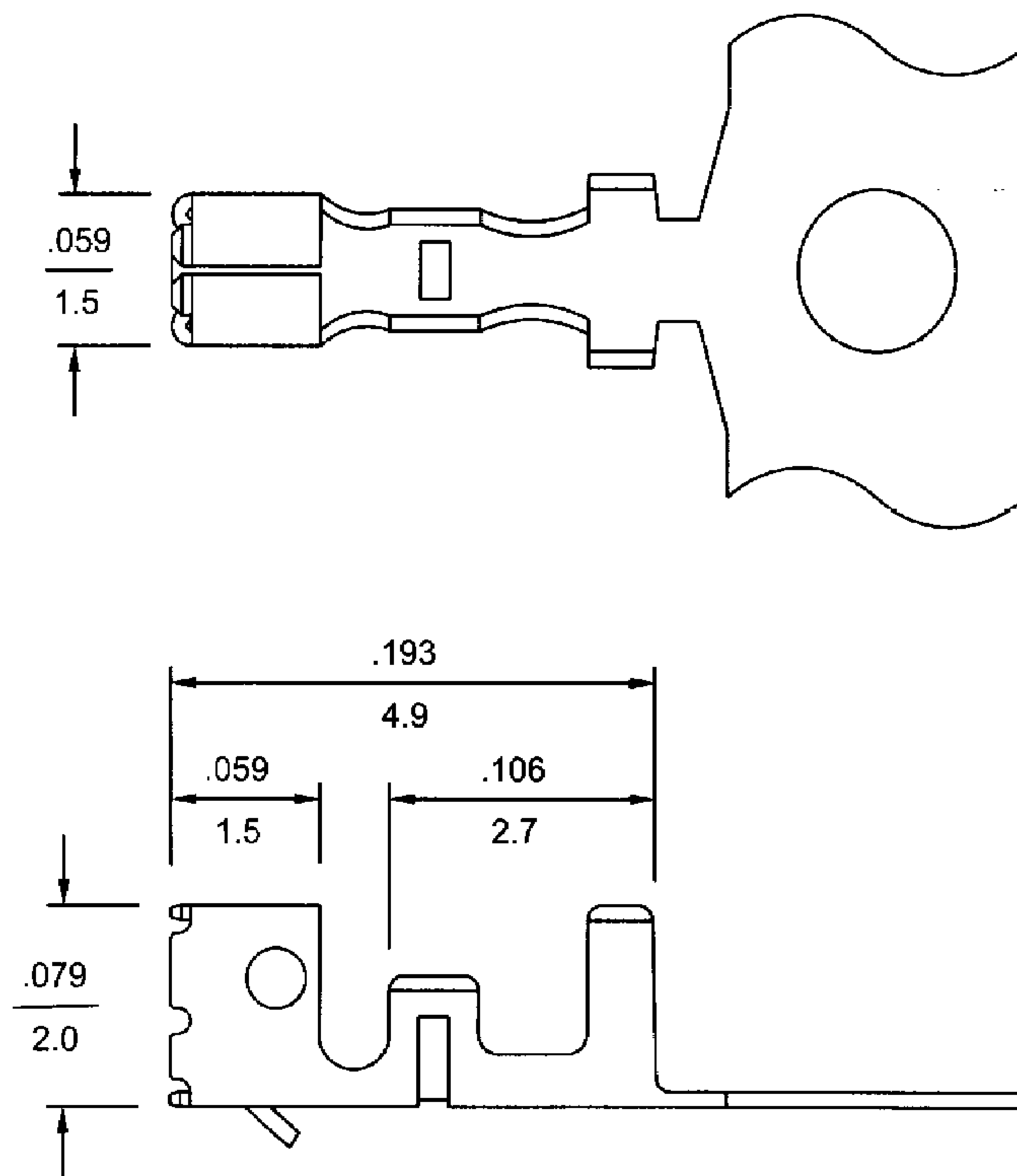


.079"(2.0mm) Center Wire-to-Board System

20002T Series Crimp Terminal

inches
mm

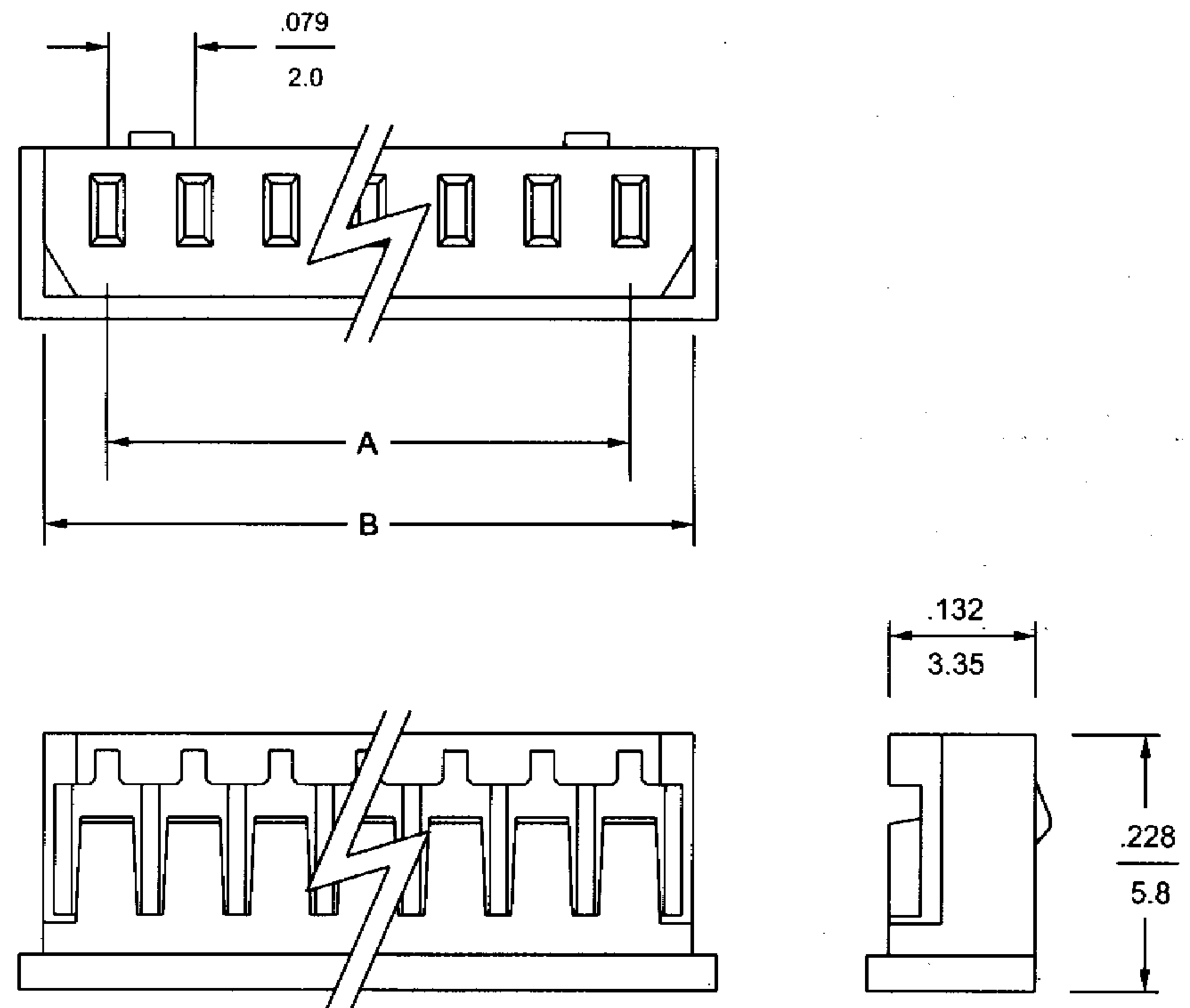
- Material: Phosphor bronze
- Finished: Tin-plated
- Used in 20002H-N series housing
- Wire range: AWG #24 ~ #30
- Thickness: 0.15mm



20002H-N Series Crimp Terminal Housing

inches
mm

- 2 ~ 15 circuits available
- Material: UL 94V-0 nylon
- Accepts 20002T terminal



Dimensional Information - in (mm)

Circuits	Dim. A	Dim. B	Circuits	Dim. A	Dim. B	Circuits	Dim. A	Dim. B
2	0.079 (2.0)	0.193 (4.9)	7	0.472 (12.0)	0.587 (14.9)	12	0.866 (22.0)	0.980 (24.9)
3	0.157 (4.0)	0.272 (6.9)	8	0.551 (14.0)	0.665 (16.9)	13	0.945 (24.0)	1.059 (26.9)
4	0.236 (6.0)	0.350 (8.9)	9	0.630 (16.0)	0.744 (18.9)	14	1.024 (26.0)	1.138 (28.9)
5	0.315 (8.0)	0.429 (10.9)	10	0.709 (18.0)	0.823 (20.9)	15	1.102 (28.0)	1.217 (30.9)
6	0.394 (10.0)	0.508 (12.9)	11	0.787 (20.0)	0.902 (22.9)			