

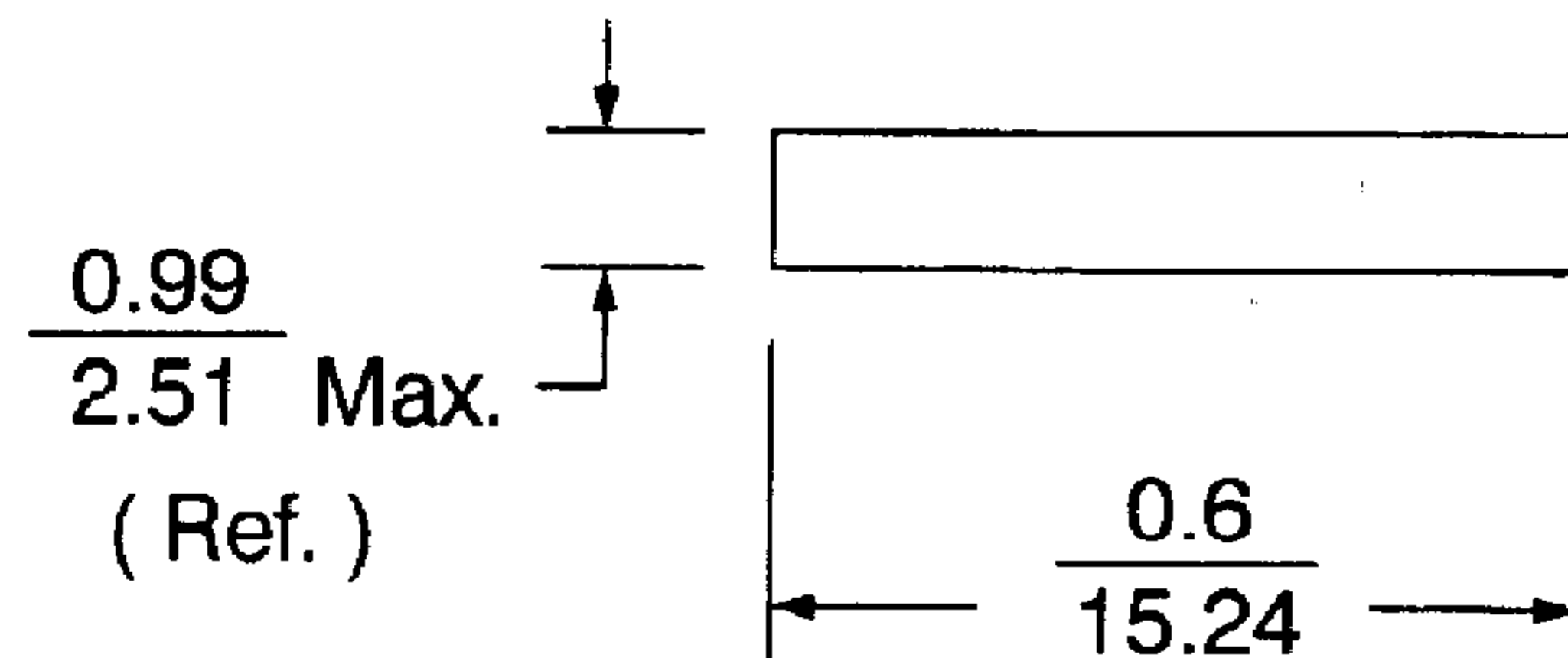
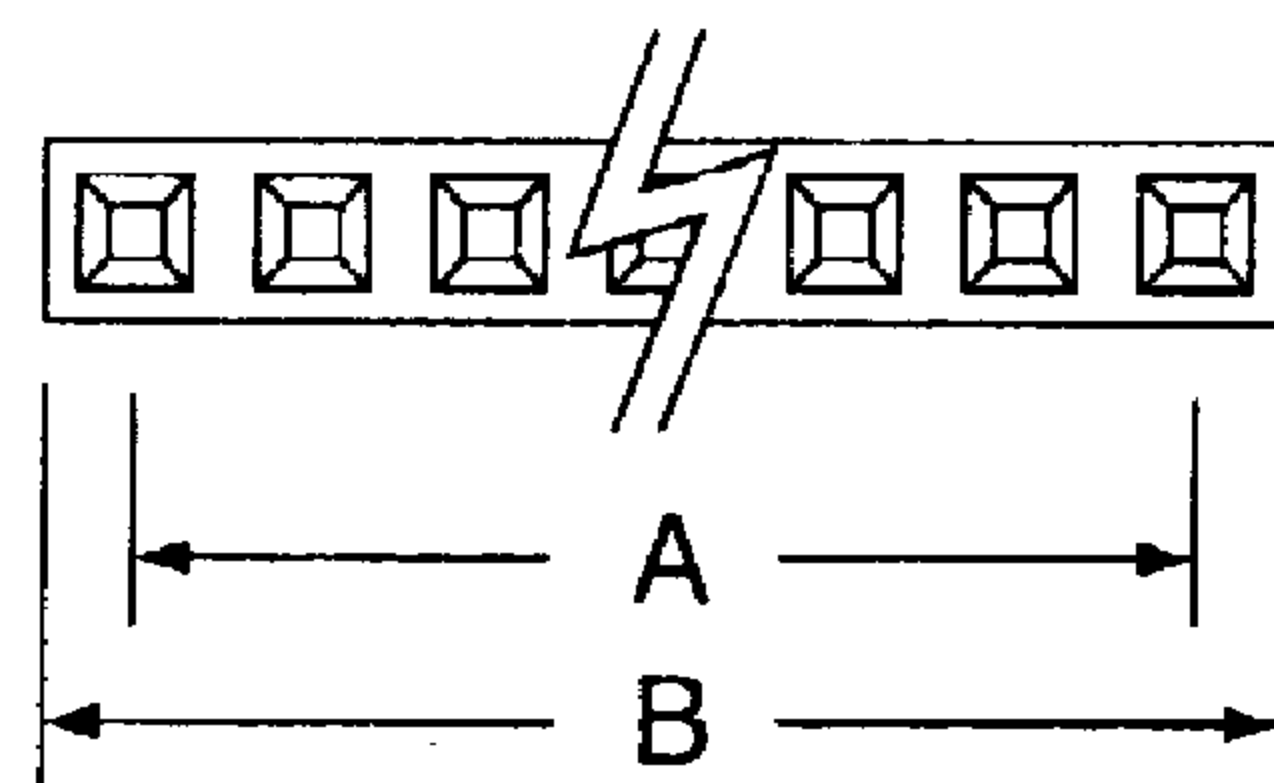
.100" (2.54mm) Single Row Crimp Connector Housings

25407HA-N Series

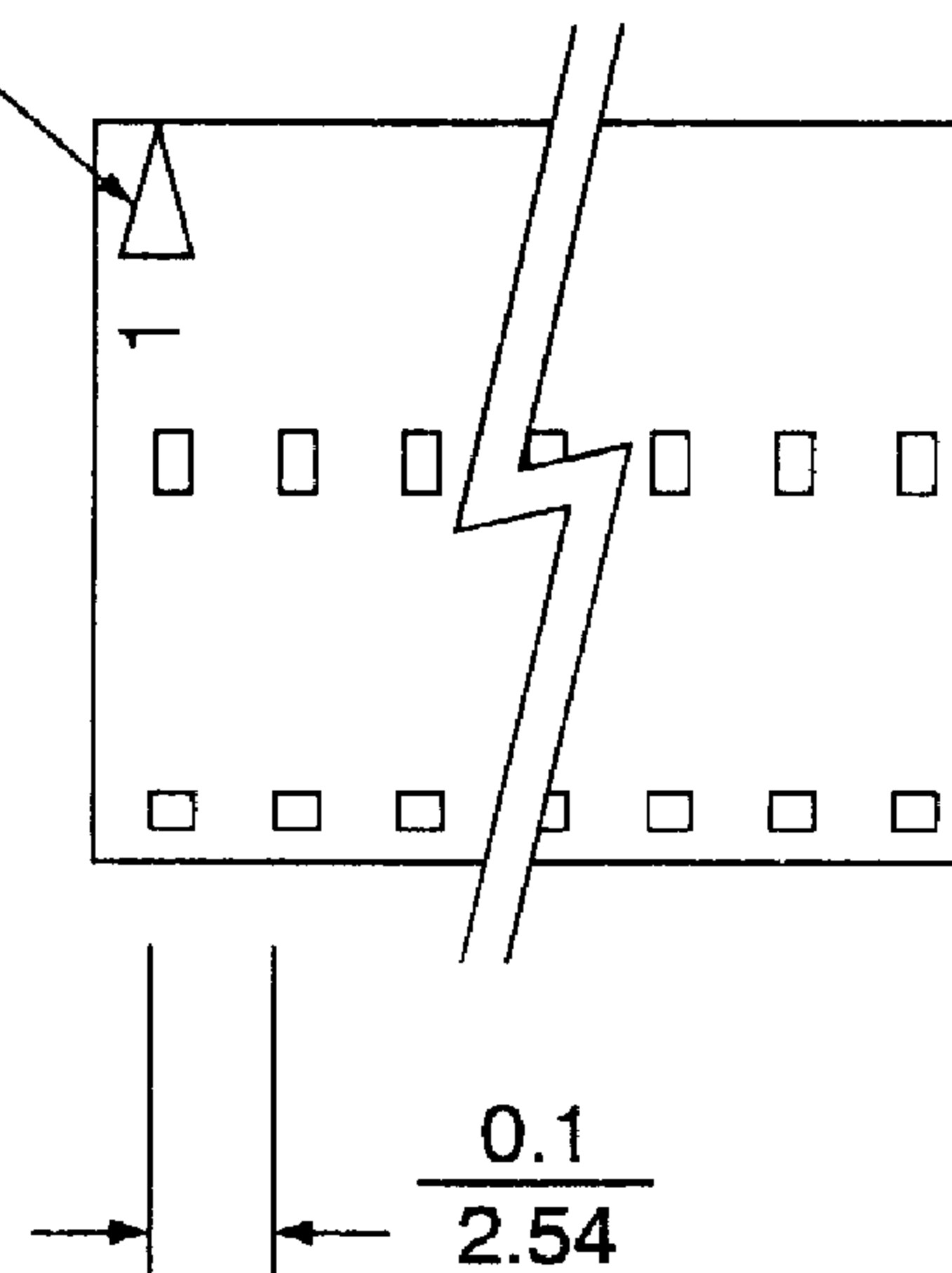
"A" Version, Non-polarized

- 2 ~ 12 circuits available
- Material: UL 94V-0 glass filled polyester
- For use with 25407TF series terminal
- Standard Color: Black
- Mates with 25407HF-N housing
- Mates with 25407W series headers

inches
mm



Circuit No. 1



Dimensional Information - in. (mm)

Circuits	Dim. A	Dim. B	Circuits	Dim. A	Dim. B
2	.100 (2.54)	.199 (5.05)	8	.700 (17.78)	.799 (20.29)
3	.200 (5.08)	.299 (7.59)	9	.800 (20.32)	.899 (22.83)
4	.300 (7.62)	.399 (10.13)	10	.900 (22.86)	.999 (25.37)
5	.400 (10.16)	.499 (12.67)	11	1.000 (25.40)	1.099 (27.91)
6	.500 (12.70)	.599 (15.21)	12	1.100 (27.94)	1.199 (30.45)
7	.600 (15.24)	.699 (17.75)			